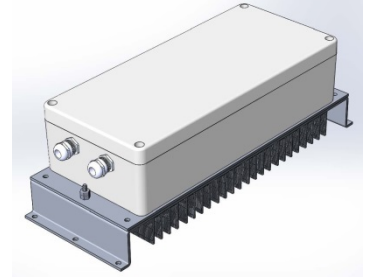


300W, IP66-Rated, Rugged Industrial Quality, AC-DC Power Supply with Wide Input Ranges and Convection Cooling by Heatsink Assembly Fins HBC 65-D3-F6-HSA Series (IP66)



- Packaged in IP66-rated enclosure
- Convection cooling via heatsink fins
- Ruggedized internal module
- Wide selection of input and output voltages
- Full electronic protection
- Field-proven design
- N+1 redundancy available

The rugged industrial quality AC-DC power supplies use field proven topology to generate the required output power. Each unit is enclosed in a robust IP66-rated waterproof, die cast aluminum package. Cooling is achieved by internal conduction to the walls of the IP66 enclosure with additional convection via the outside surface. Cooling is further enhanced by the heatsink assembly block attached to the under-surface of the unit. The heatsink frame has mounting flanges which also allow for mounting on uneven and thermally non-conductive surfaces. The input and output are via sealed cable glands, circular connectors or custom connections. The internal board is ruggedized for immunity to high levels of shock and vibration. An optional built-in redundancy diode allows for parallel and N+1 operation. Full electronic protection, low component count, large design headroom, and the use of components with established reliability contribute to high MTBF. The unit is manufactured at our plant under strict quality control.

SPECIFICATIONS

<p>Input Voltage 115Vac (95 – 132V) 47 - 63Hz 230Vac (190 – 264V) 47 - 63Hz 250Vdc (210 – 290V) 300Vdc (250 – 350V) Other voltages on request</p> <p>Input Protection Inrush current limiting Varistor Internal safety fuse Lower voltage than the specified minimum input will not damage the unit</p> <p>Isolation 2250VDC input to chassis 4300VDC input to output 8mm spacing 500VDC output to chassis (min.)</p> <p>Standards Designed to meet EN60950-1 and corresponding UL and CSA standards</p> <p>EMI EN55032 Class A with margins or as required</p> <p>Switching Frequency 55kHz ±3kHz</p> <p>Hold Up Time Minimum 10ms at full load for 5% drop of output voltage at nominal input</p>	<p>Output Voltage/Current 12Vdc, 24Vdc, 48Vdc or 125Vdc 300W continuous output power Output is floating; either terminal can be grounded Other outputs on request</p> <p>Redundancy Diode Not installed. Available as option</p> <p>Line/Load Regulation ± 1% combined from zero load to full load</p> <p>Dynamic Response Max 5% voltage deviation for 10% to 50% load step, with better than 1msec recovery time</p> <p>Output Ripple / Noise Less than 1% of output voltage peak to peak or 0.2% RMS of the output voltage (20MHz BW)</p> <p>Output Overload Protection Rectangular current limiting with short-circuit protection (no hiccup) Thermal shutdown in case of insufficient cooling (self resetting)</p> <p>Output Overvoltage Protection Double regulator loop completely stable and independent of main loop</p>	<p>Efficiency Output voltage dependent. Typically >80% at full load</p> <p>Operating Temperature Range -25 °C to 55 °C for full specification Extended temperature ranges available on request</p> <p>Temperature Drift 0.03% per °C over operating temperature range</p> <p>Cooling Natural convection via the surface of the IP66 enclosure and additional cooling via the heatsink assembly fins</p> <p>Environmental Protection IP66 enclosure Internal module: Ruggedized and conformal coated</p> <p>Shock/Vibration IEC 61373 Cat 1 A&B</p> <p>Humidity 5-100% condensing</p> <p>MTBF 150,000 at 45°C Demonstrated MTBF is significantly higher</p>	<p>Indicators None</p> <p>Control Input None</p> <p>Alarm Output Not installed Optional output Fail Alarm</p> <p>Package/Dimensions (W x H x D) D3-IP66 module is installed on HSA heatsink fin assembly. Overall dimensions: 160 x 140 x 432 mm 6.3 x 5.53 x 17"</p> <p>Weight Approx. 5 kg (11 lb.)</p> <p>Connections Internal barrier-type terminal block accessible via sealed cable glands. Optional connectors instead of cable glands</p> <p>RoHS Compliance Compliant</p> <p>Warranty Two years subject to application within good engineering practice</p>
--	--	---	--

The specifications on this data sheet are generic and are subject to change. Enhancements to these specifications can be provided upon request.

OEM of industrial & railway quality AC/DC power supplies and battery chargers, DC/DC converters, DC-AC sine-wave inverters, phase and frequency converters, DC-output UPS systems and complete power systems in 19" & 23" racks since 1982. Custom or standard. ABSOPULSE is a BABT-approved facility



ABSOPULSE ELECTRONICS LTD
110 Walgreen Road, Ottawa, Ontario | K0A 1L0 | CANADA
Tel: +1-613-836-3511 | Fax: +1-613-836-7488
<https://absopulse.com/contact> | <https://www.absopulse.com>