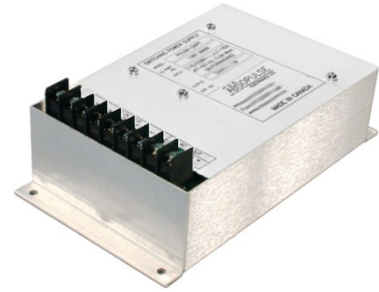


250W, Rugged, Encapsulated DC/DC Converter for Heavy-duty Applications PDC 250 Series



- Rugged, field-proven design
- Fully encapsulation
- Conduction cooling
- Full electronic protection
- Wide temperature range
- Wide input ranges

This fully encapsulated, industrial quality, DC/DC converter uses field-proven technology to generate 250W output power. It is a mature product with a track-record in numerous applications. The converter is entirely potted with a thermally conductive MIL-grade silicon rubber compound to provide immunity to shock, vibration and humidity. Cooling is via baseplate by conduction. The unit was designed for continuous operation at 70°C with installation on appropriate size of heat-sinking surface. Full electronic protection, low component count, large design headroom, and the use of components with established reliability ensure high MTBF. The unit is suitable for transportation, mining, oilrigs, military and other harsh environments. Versions that are designed to meet EN50155 railway specifications are also available. The converter is manufactured at our plant under strict quality control.

SPECIFICATIONS

Input Voltage

24Vdc (21V – 30V)
48Vdc (42 – 60V)
125Vdc (95 - 140V)
Consult factory for other voltages and ranges, including for railway

Input Protection

Inrush current limiting
Varistor
Internal safety fuse
Lower voltage than the specified minimum input will not damage the unit

Isolation

According to input/output voltage, but minimum of:
1000VDC input to chassis
1500VDC input to output
500VDC output to chassis

Standards

Designed to meet EN60950-1 and corresponding UL and CSA standards

EMI

EN 55022 Class A with margins

Switching Frequency

55kHz ±3kHz

Output Voltages

12Vdc/20A, 24Vdc/10A, 36Vdc/17A or 48Vdc/5A, 72Vdc/3.3A
Output is floating; either terminal can be grounded.
Consult factory for other voltages

Redundancy Diode

Not installed
Available on custom versions

Line/Load Regulation

±1% combined from zero load to full load

Dynamic Response

Max 5% voltage deviation for 10% to 50% load step, with better than 1msec recovery time

Output Ripple / Noise

Better than 1% of output voltage peak to peak or 0.2% Vrms (20MHz BW)

Output Overload Protection

Rectangular current limiting with short-circuit protection (no hiccup)
Thermal shutdown with automatic reset in case of insufficient cooling

Output Overvoltage Protection

Second regulator loop

Efficiency

Output is voltage dependent.
Typically 80% at full load

Operating Temperature Range

-40°C to 70°C cold-plate temperature for full specification

Temperature Drift

0.03% per °C over operating temperature range

Cooling

Conduction cooling via base plate to customer chassis or heat-sink

Environmental Protection

Full encapsulation with thermally conductive silicon potting compound with UL94V-0 flammability rating.
Meets environmental criteria as requested in MIL-810 C, D

Shock/Vibration

IEC 61373 Cat 1 A&B

Humidity

5 - 95% non-condensing

MTBF

150,000 hours @ 45 °C
Demonstrated MTBF is significantly higher

Indicators

None

Control Input

None

Alarm Output

None

Dimensions

P59: 108 x 70 x 191 mm (4.3" x 2.8" x 7.5") including terminal block and flanges
Mounting holes are clear

Weight

1.5 kg (3.2 lbs)

Connections

9-pole barrier-type terminal block, 3/8" spacing

RoHS Compliance

Fully compliant

Warranty

Two years subject to application within good engineering practice

Terminal Block Pin-out

DC OUTPUT						DC INPUT		
-	-	+	+	NOT USED	NOT USED	GND	-	+
1	2	3	4	5	6	7	8	9

Enhancements to these general specifications and customizing can be accommodated upon request. Specifications are subject to change.

Designer and manufacturer of quality ac-dc power supplies and battery chargers, converters, inverters, dc-output UPS systems, complete rack mount systems and DC-input fluorescent lamp inverters since 1982. Custom or standard. Absopulse is a BABT-approved Facility.



ABSOPULSE ELECTRONICS LTD

110 Walgreen Road, Ottawa, Ontario. K0A 1L0. CANADA

Tel: +1-613-836-3511 | Fax: +1-613-836-7488

E-mail: absopulse@absopulse.com | <http://www.absopulse.com>

For more information, please see:

http://www.absopulse.com/Absopulse_railway_mobile_extreme_environment_solutions.php

October 29, 2012/TS/CL

Made in Canada